

In This Issue

[CTC Updates QuickBuilder Automation Programming Suite](#)

[Meet Clayton Controls](#)

[CTC Controls Manufacture of Reed Switches](#)

CTC Releases QuickBuilder Automation Programming Suite v1.2

QuickBuilder is the programming suite that enables users to build applications for CTC's Model 5300 web enabled controllers.

With the release of version 1.2, users get faster performance and a feature-packed debug toolkit, combining to help get machines and projects up and running quickly and easily.

What can you expect?

- up to 25 times faster code execution on your 5300 controller with an "Optimize" compiler option
- a debug toolkit with step-by-step and line-by-line walkthrough for concurrent tasks, as well as the ability to add breakpoints to your code for additional debugging
- faster update times for key program diagnostic windows
- user configurable communication timeouts

Users can select up to 16 tasks from the Program Status window and choose whether to walk through the tasks in step-by-step or line-by-line debug mode. Meanwhile, tasks that are not in debug mode continue to operate normally. This allows users to isolate and debug portions of their programs while the rest of the automation operates as usual.

[Get more information](#) about the new features in QuickBuilder v1.2 and the Model 5300 performance increase. Upgrade your controller and learn how these tools will improve your automation process.



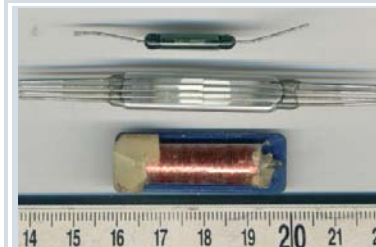
QuickBuilder Webinar Feb. 22

Contact [Jan Swaine](#) (508-435-9595 x300) or [Karl Chambers](#) (508-435-

Small, but Powerful...

In 1957, Hamlin Electronics became one of the first companies in the world to manufacture reed switches.

Reed switches are micro switches perfect for small, limited spaces, such as door locks or car ignitions. Think tiny, but powerful - and vital for all types of applications, especially in the auto industry.



The basic reed switch consists of two ferromagnetic nickel-iron wires sealed inside a glass capsule. The two reeds act as magnetic flux conductors when exposed to an external magnetic field from either a permanent magnet or an electromagnetic coil. Reed switches can operate for billions of operations on low voltage logic loads.

Hamlin's manufacturing process relies on the [CTC 5300](#) controller and [HMI](#) to produce two styles of switches: a three-reed switch and a two-reed switch. The machine that manufactures the three-reed switch uses CTC's 5300 controller interfaced with 12 axis of servo, a GE Fanuc robot, and several cameras.

The two-reed switch machine incorporates two 5300 controllers that are electrically connected using a rotating table with a switch pack on the side. The table can rotate all day in one direction and still have communication between the two controllers - one

9595 x 331) to learn more and reserve your spot at the upcoming QuickBuilder Programming Webinar on February 22.

Meet Clayton Controls

For almost 40 years, Clayton Controls has been dedicated to delivering solutions that increase productivity while reducing material and transaction costs. Clayton has one of the industry's most extensive product offerings - including the CTC line of controllers - and a highly skilled team of professionals with the knowledge and experience to address applications ranging from simple mechanical components to complex machine and motion controls. From pneumatic and electronic, to vacuum and electro-mechanical design, Clayton's product lines satisfy virtually any set of automation requirements.



Headquartered in Costa Mesa, Calif., Clayton's team is headed by vice president John Allard and president Chris Brown. Allard, who is a 17-year veteran of the company is proud of the company's focus on putting together the right solution for each customer's individual need.

Visit the [Clayton Controls website](#) to learn more about how CTC and Clayton work together or contact National Sales Manager, Karl Chambers (508.435.9595, karl.chambers@ctc-control.com).

We're always interested in your feedback! Please e-mail us with questions, suggestions, ideas.

Our job is to make your job easier!

Sincerely,
Control Technology Corporation

[Join Our Mailing List!](#)

controller on the rotating table, and the other in an enclosure.

Hamlin Electronics offers a [wealth of information](#) about reed switch technology; learn more about how the Model 5300 can enhance your manufacturing process at the [CTC website](#).

Did you know?

Reed switches are everywhere. Find them in...

- Door and window sensors in burglar alarm systems
- Bicycle wheel speed sensors
- Pipe organ pedal keyboards
- Your laptop: to put it into sleep mode when the lid is close

Quick Links

[CTC Download Center](#)

[CTC E-Learning Center](#)

[About Us](#)

Made in the USA

