



Making the physical connections:

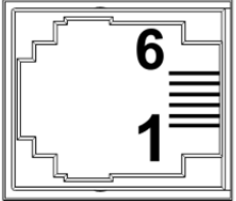
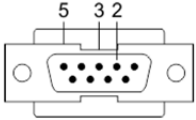
Serial: A standard USB Serial adapter can be used on PCs without physical serial ports

CTC 2881 modular-jack cable (\$19) and 2880B 9-Pin adapter (\$44).



OR you can make your own:

Wiring Diagram:

Pin Mappings for COM port (on controller)	Pin Mappings for DB-9 Connector (on cable to Computer)
	
1.	
2. TxD Outbound (Comm0) goes to:	Pin 2: (Rx) Inbound
3. Common goes to:	Pin 5: (Signal Ground)
4. Common	
5. Rx) Inbound (Comm0) goes to:	Pin 3: (Tx) Outbound
6.	

Ethernet:

Ethernet crossover cable is recommended. Or you can use a standard Ethernet cable if an Ethernet Switch or Hub is used. 5300 controllers can accept either type of Ethernet cable.

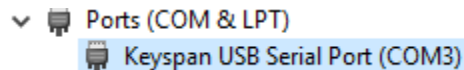
Software Tool:

Download and install CTCMonitor V3.6 from CTC's website. *Yes, it runs under Windows 7, 10 and 11 32-bit and 64-bit platforms*

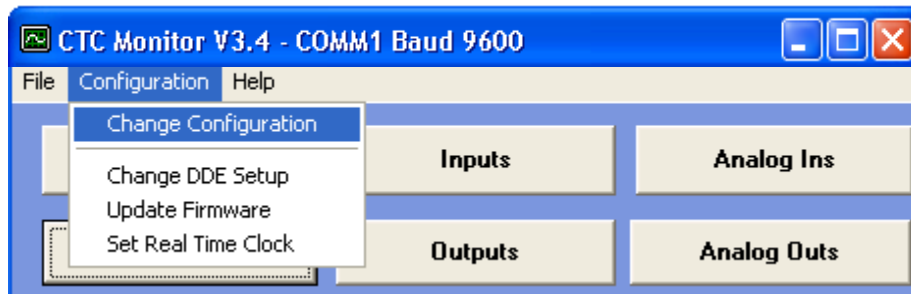
<http://support.ctc-control.com/customer/downloads/ctcmon/CTCMON36-Install.zip>

Connecting to your CTC controller via serial port:

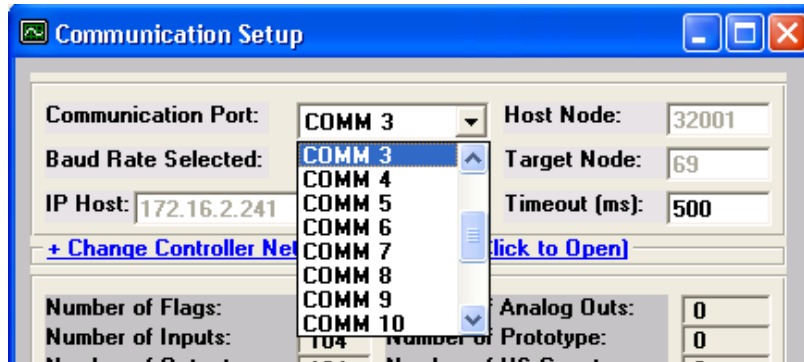
Connect your CTC2880B and 2881 to your PC, note the port number. If a USB adapter is used you will need to determine the port number it was assigned to by Windows. Go to Control Panel and view *Device Manager*. You should see the port assignment similar to below:



Pull down the *Configuration* menu and select *Change Configuration*



Select the PC's port connected to the CTC 2880B / 2881 and press Exit.



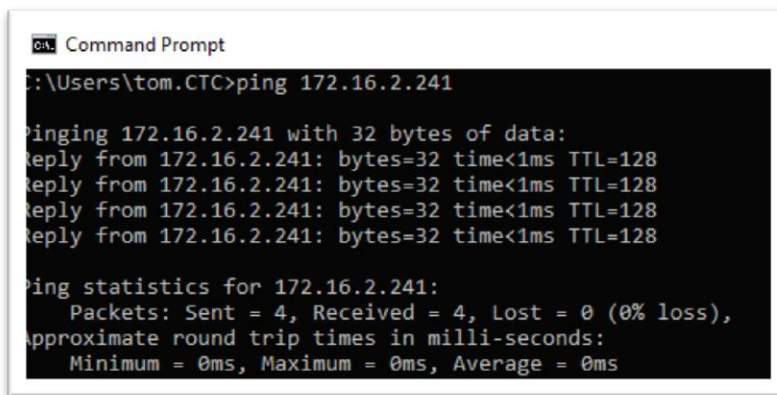
You should then see a successful connection to your CTC Controller.



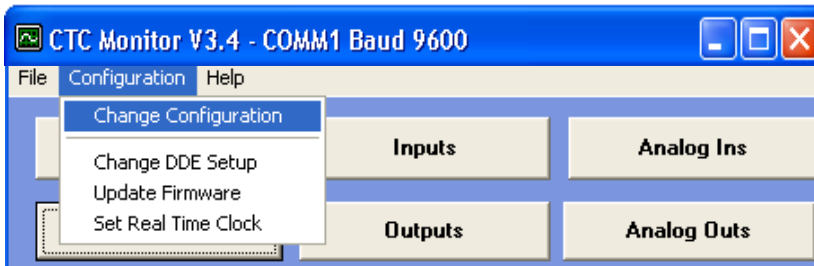
Skip to page 4

Connecting to your CTC controller via Ethernet:

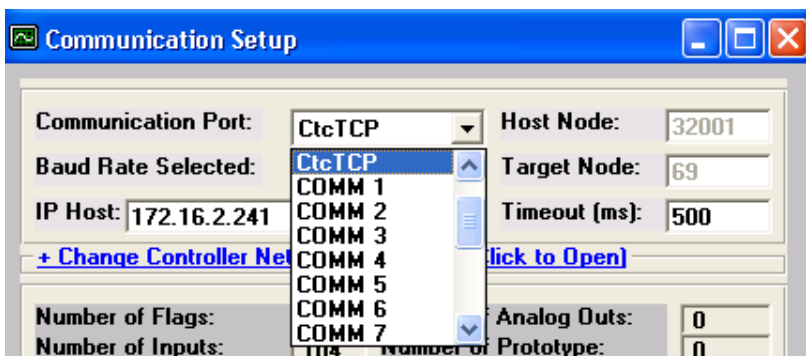
Connect your Ethernet cable to your PC. Verify your PC is on the same address network as your CTC controller. Typically, pinging the controller is the best way to validate this.



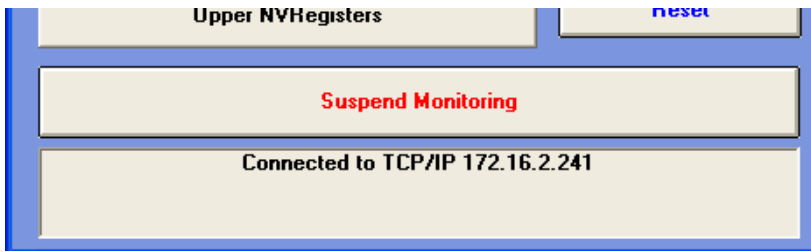
Pull down the *Configuration* menu and select *Change Configuration*



Select CtcTCP and enter the Controller's IP address into the IP Host field. Then press Exit.

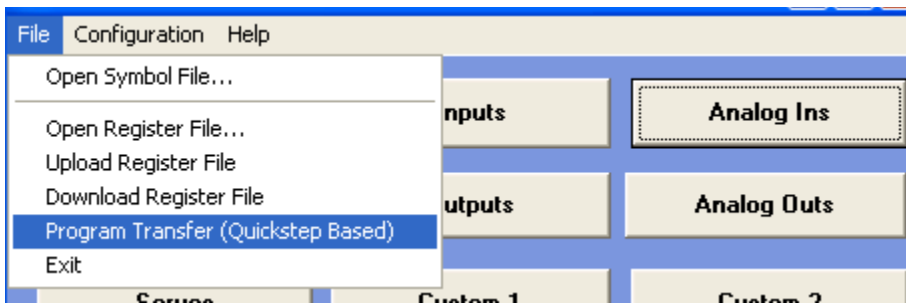


You should then see a successful connection to your CTC Controller.

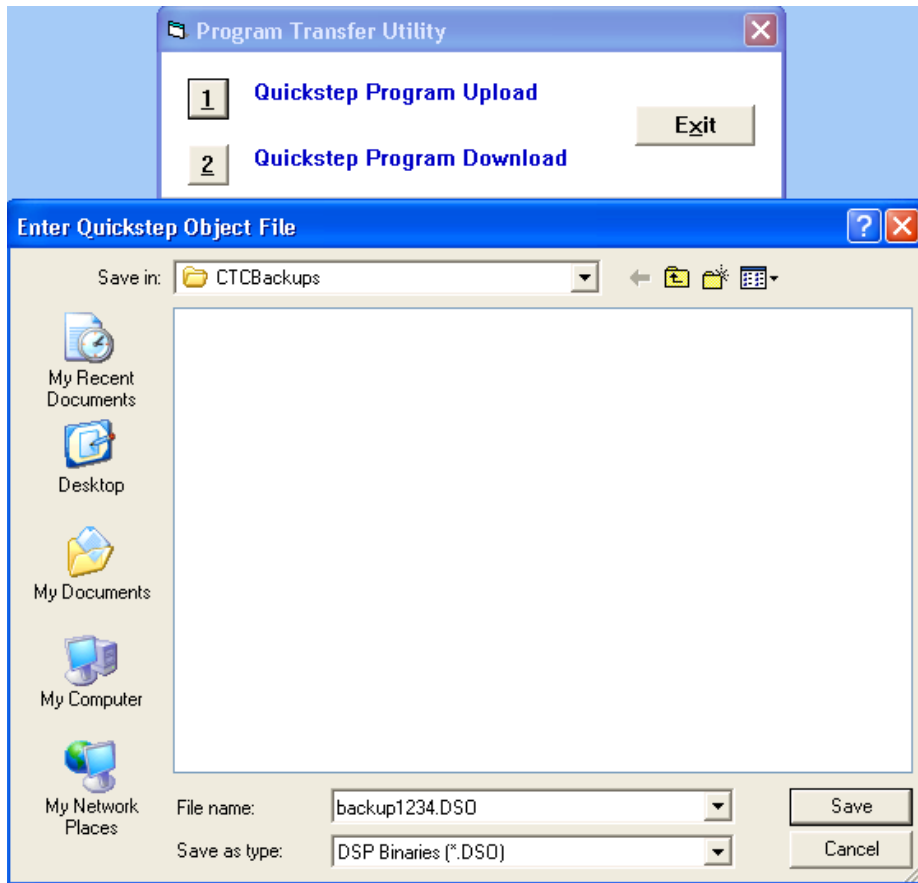


Uploading your Quickstep program and register file:

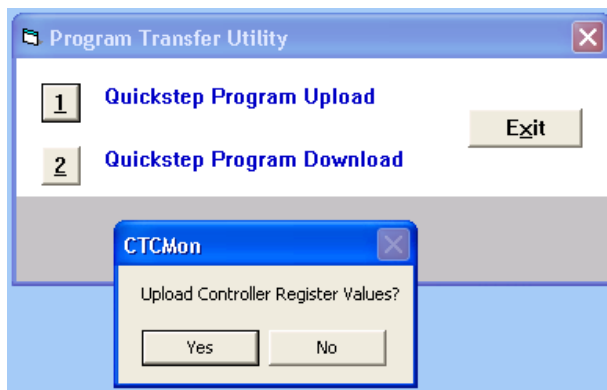
To upload programs from 2000 and 5100/5200 series Controllers (and 5300 controllers programmed in Quickstep) pull down the *File* menu and select *Program Transfer (Quickstep Based)*



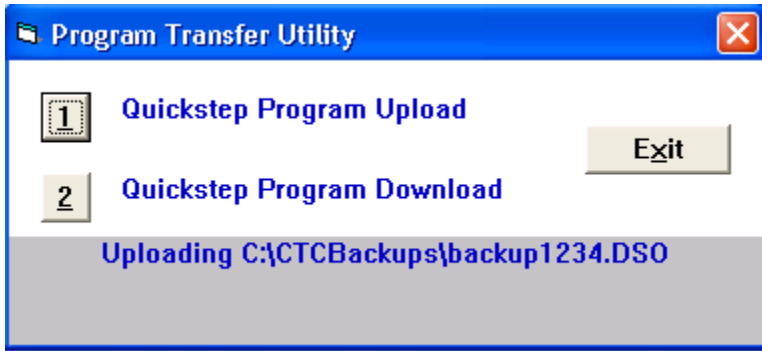
Select *Quickstep Program Upload* and enter a name for the program.



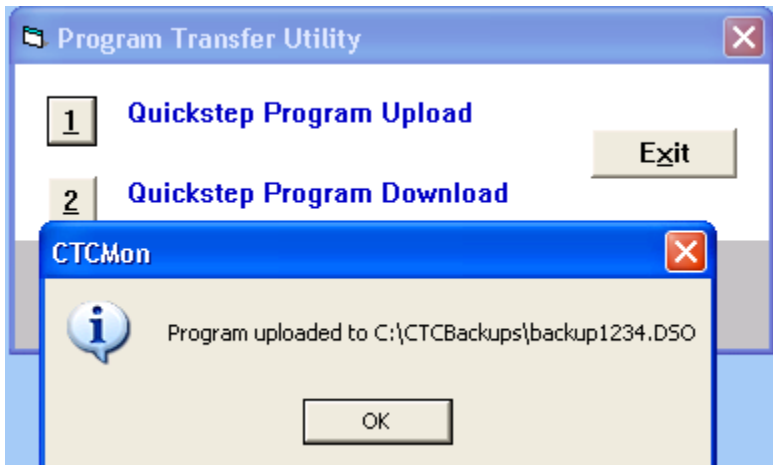
When prompted to *Upload Controller Register Values*, click Yes.



You will see the following message during the upload process.



Once complete you will see the following message.



Your program is the .DSO file. It is a compiled program and cannot be viewed within Quickstep until it is uncompiled and .DSP, .FIG, .SYM and .TAB files are created using the 'Ctcutils' utility. The register data from your controller is in the .TXT file, which is an ASCII file that can be read within a text editor, like Notepad.