

Blue Fusion Series Module Firmware Upgrade Procedure

14

Note: to upgrade the controller's CPU firmware, refer to [TechNote #12](#).



Control Technology Corporation, Hopkinton, MA • 800.282.5008 • www.ctc-control.com

The following tech tip will assist you in upgrading firmware on various modules installed on Blue Fusion Controllers. **It is very important not to interrupt the upgrade process once it has begun.**

1. Save the firmware file to a local directory on your hard drive.

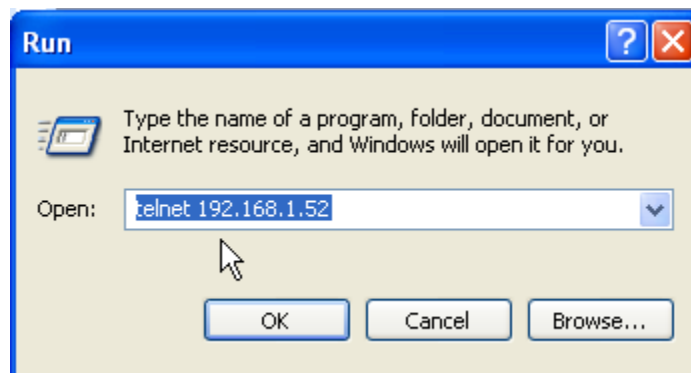
The latest versions of firmware files can be found in the “Download” area of our website: <http://www.ctc-control.com>. Once the file is saved to a local directory on your hard drive continue performing the following steps.

2. Copy the new firmware file to the controller

- Stop the program running in the controller.
- Open your internet browser and begin an FTP session with the Blue Fusion controller by typing: [FTP://admin@\[controller's IP Address\]](ftp://admin@[controller's IP Address]). Enter user name and password when prompted. (default user name is “admin”, default password is “BlueFusion”).
- Open the local directory where you saved the new firmware file. Drag and drop the new firmware file to the _system\Firmware directory of the controller. Allow ample time for the controller to receive the new firmware file. As the file transfers, status light ST1 will flash.

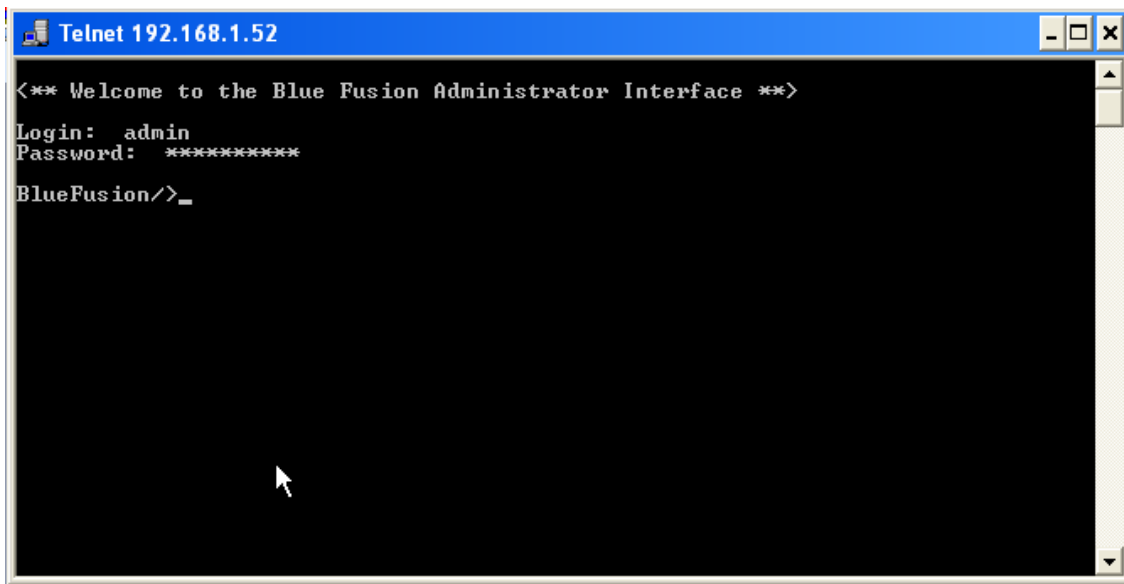
3. Update the firmware via Telnet.

- After the new firmware is successfully copied to the controller, you must update the old firmware via a Telnet session: Telnet into the controller by clicking “Start” and selecting “Run”. Enter the command “telnet [controller’s IP address] and click “OK”



Note: Keep in mind all Telnet commands are case sensitive.

- After the Telnet command window opens, log in with user name and password when prompted. (Default user name is “admin”, default password is “BlueFusion”)



```
Telnet 192.168.1.52
<*** Welcome to the Blue Fusion Administrator Interface ***>
Login: admin
Password: *****
BlueFusion/>_
```

- At the “BlueFusion” command prompt type the command “cd _system\Firmware”. This will change the working directory to the “Firmware” directory.

```
Telnet 192.168.1.52
<*** Welcome to the Blue Fusion Administrator Interface ***>
Login: admin
Password: *****
BlueFusion/>cd _system/Firmware
SUCCESS: cd command successful.
BlueFusion/_system/Firmware/>_
```

- Next, type the command “dir”. This will display the contents of the Firmware directory. Type the command “update [filename] where [filename] is the correct file for the module you wish to update, then press “Enter”. The loader version and update progress will appear on the screen.

```
Telnet 12.40.53.52
BlueFusion/>dir
drw-rw-rw-  0 owner group 000256 FEB 14 15:09 _system
drw-rw-rw-  1 owner group 1024256 JAN 01 00:00 RAMDISK
Volume: Capacity - 7864080 Free - 3545760 Deleted - 3030720.

BlueFusion/>cd _system
SUCCESS: cd command successful.

BlueFusion/_system/>cd Firmware
SUCCESS: cd command successful.

BlueFusion/_system/Firmware/>dir
-rw-rw-rw-  0 owner group 438835 AUG 03 08:52 M340AV0106.hex
-rw-rw-rw-  0 owner group 385563 AUG 08 08:16 M340AV0103.hex
Volume: Capacity - 7864080 Free - 3545760 Deleted - 3030720.

BlueFusion/_system/Firmware/>update M340AV0103.hex
M340 Digital Philips Re-Programming:
Philips LPC loader version 1.27
  converted to binary format...
  image size : 137064
Synchronizing. OK
Read bootcode version: 1.65.0
Read part ID: LPC2292, 256 KB ROM / 16 KB SRAM

Sector 0: .....
.....
Sector 1: .....
```

